



CADprofi 2021

Summary of main changes made to the program since the CADprofi 2020.01 version.



CADprofi

Table of contents:

- [General commands \(affects all modules\)](#)
- [CADprofi Architectural](#)
- [CADprofi Electrical](#)
- [CADprofi Mechanical](#)
- [CADprofi HVAC & Piping](#)
- [Manufacturers libraries](#)
- [Adjustment to CAD programs](#)



CADprofi

✓ Program optimization and acceleration

In the current version of the program, many code optimizations have been introduced, thanks to which the opening of dialog boxes with symbol libraries has been accelerated several times, and additionally some CADprofi commands have been significantly accelerated (e.g. isolating 2D fittings, inserting flanges into 2D fittings, generating energy distribution diagrams). The code optimization affects CAD programs based on the arx/zrx /grx/brx technology.

In some commands, additional options have been introduced, e.g. the ability to specify any block names (when adding symbols to the program yourself), the ability to lock the scaling of symbols in graphic legends, and others.

The ability to determine the location of objects has been added to the system of creating specifications. Specifications can now contain information in which rooms or zones the individual objects are located. This option allows user to define the amount of materials in regard to e.g. housing units.



✓ CADprofi – object placement (command extension)

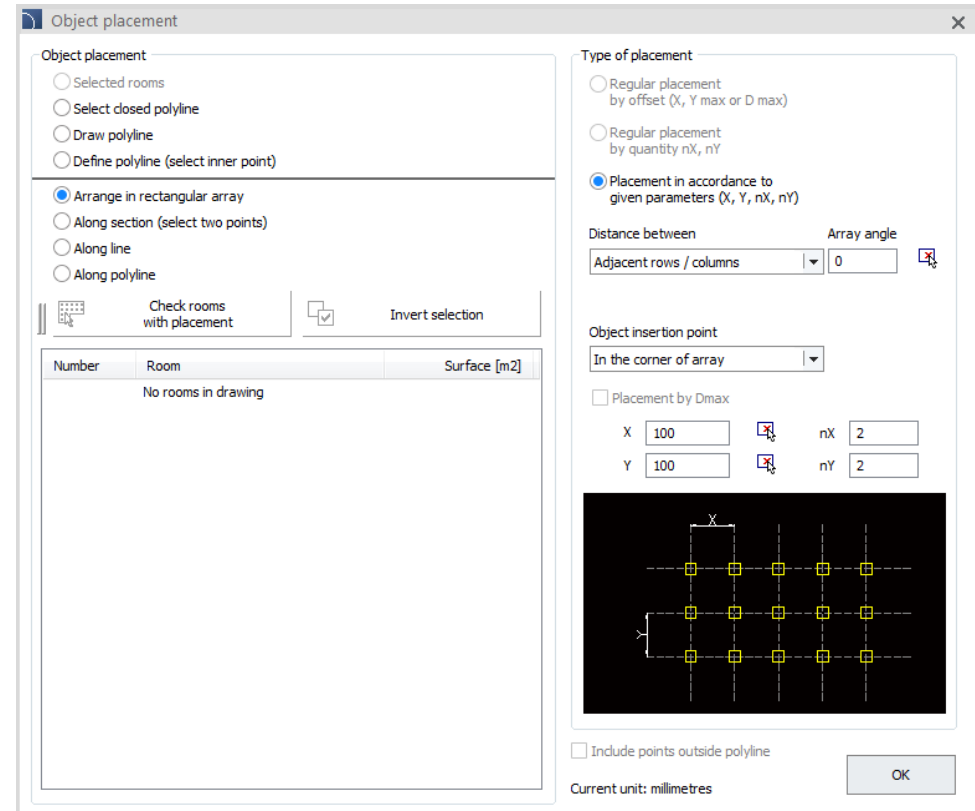
The *Arrange* command allows user to quickly arrange objects in selected rooms. It is possible to arrange objects in selected rooms, in the indicated boundary (polyline) or in the newly drawn boundary. In the latest version of the program, the command has been extended with the possibility of placing objects:

- in rectangular array,
- along indicated points,
- along line or polyline.



[Watch video](#)

The *Arrange* command significantly speeds up the insertion of fire detectors, sprinklers, lighting and other objects.

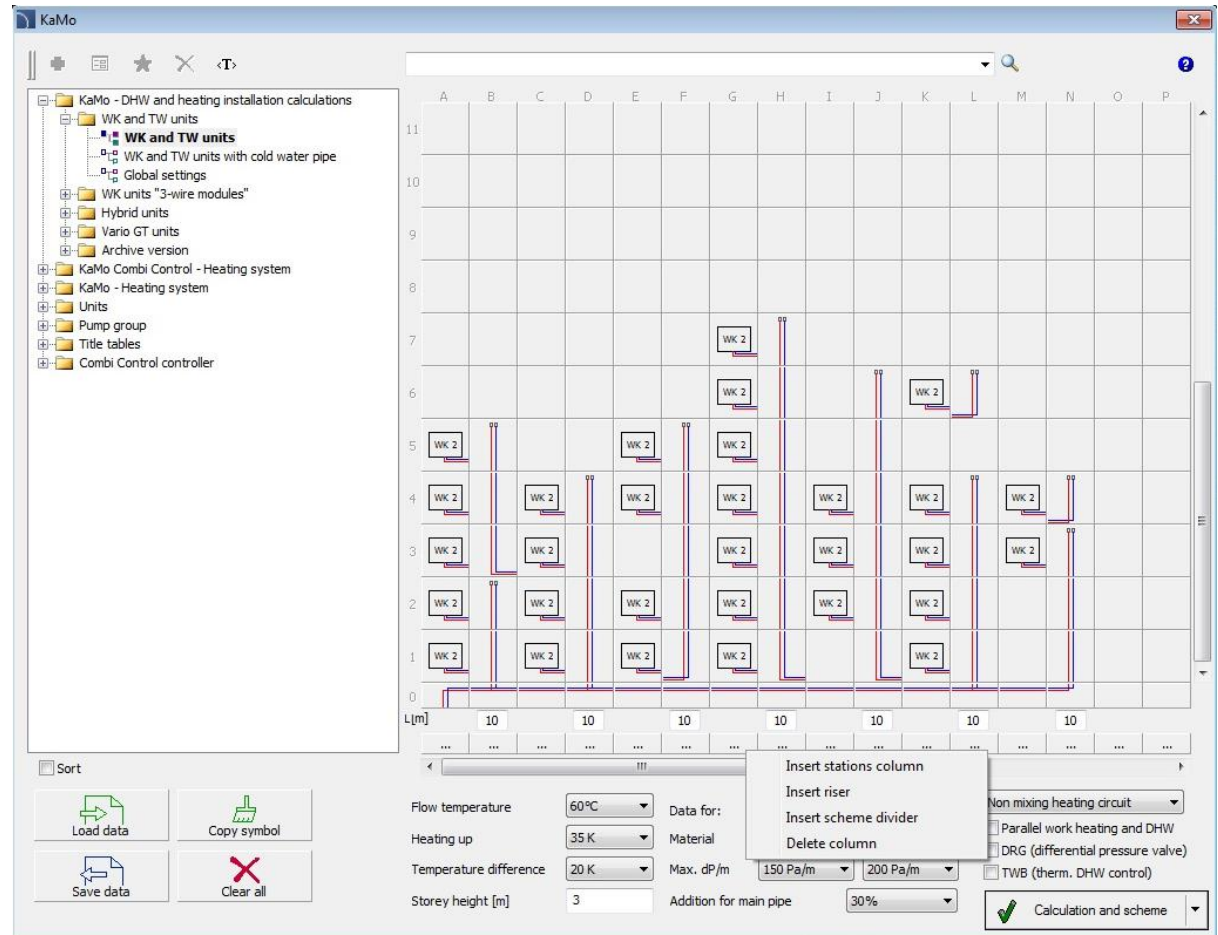


✓ CADprofi – integrated calculations for the central heating and water installations

A completely new schemes generator for decentralized hot water preparation has been introduced in the KaMo library. This generator is integrated with the hydraulic calculations of the central heating system and water installations.

Program functionality:

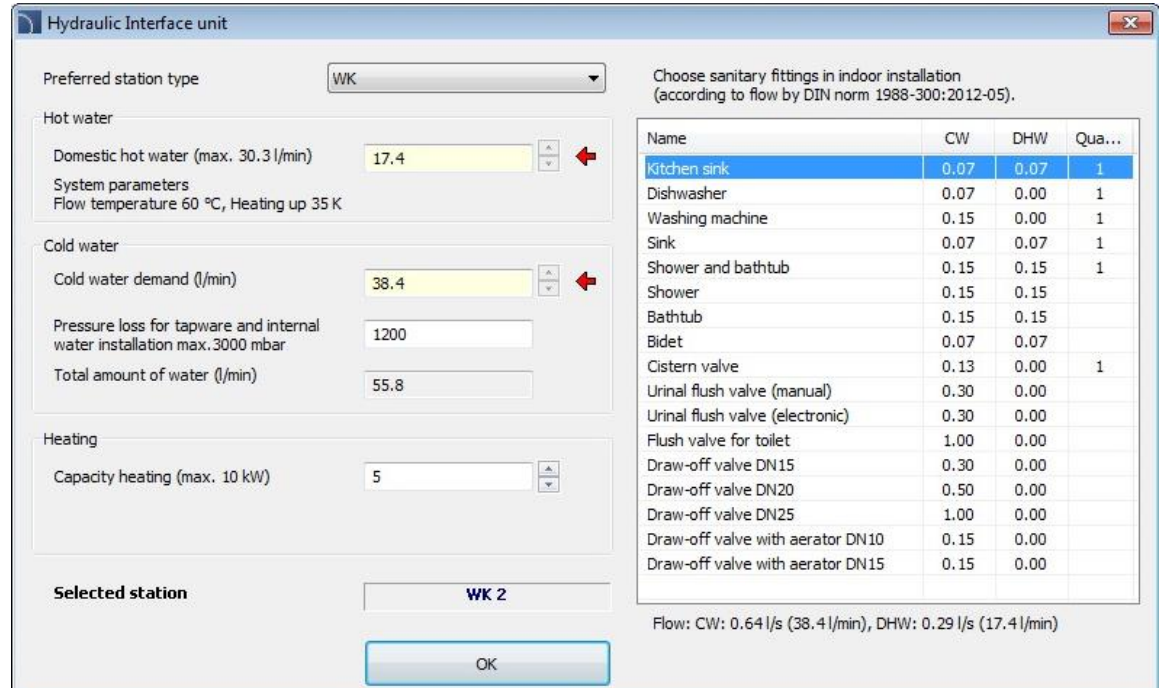
- Unlimited number of risers and floors..
- Any number of receivers connected to the risers.
- Any branching in the scheme with automatic correction of cable routing..
- Possibility to define the beginning of the scheme on the lower floor or at any point (e.g. on the highest floor if there is a heat source there).
- Possibility to use residential stations that work for the needs of central heating and/or hot water. Typical central heating distributors to which radiators or other receivers are connected (e.g. underfloor heating circuits) can be used instead of stations. Thanks to this, program can be used to design any central heating installations.



The main window that allows user to conveniently define any scheme

- Auto-complete, copy and delete receiver modes allows user to quickly define the scheme.
- Possibility of designing installations with "three-wire" stations (with common return pipe and separate supply pipes for central heating and hot water).

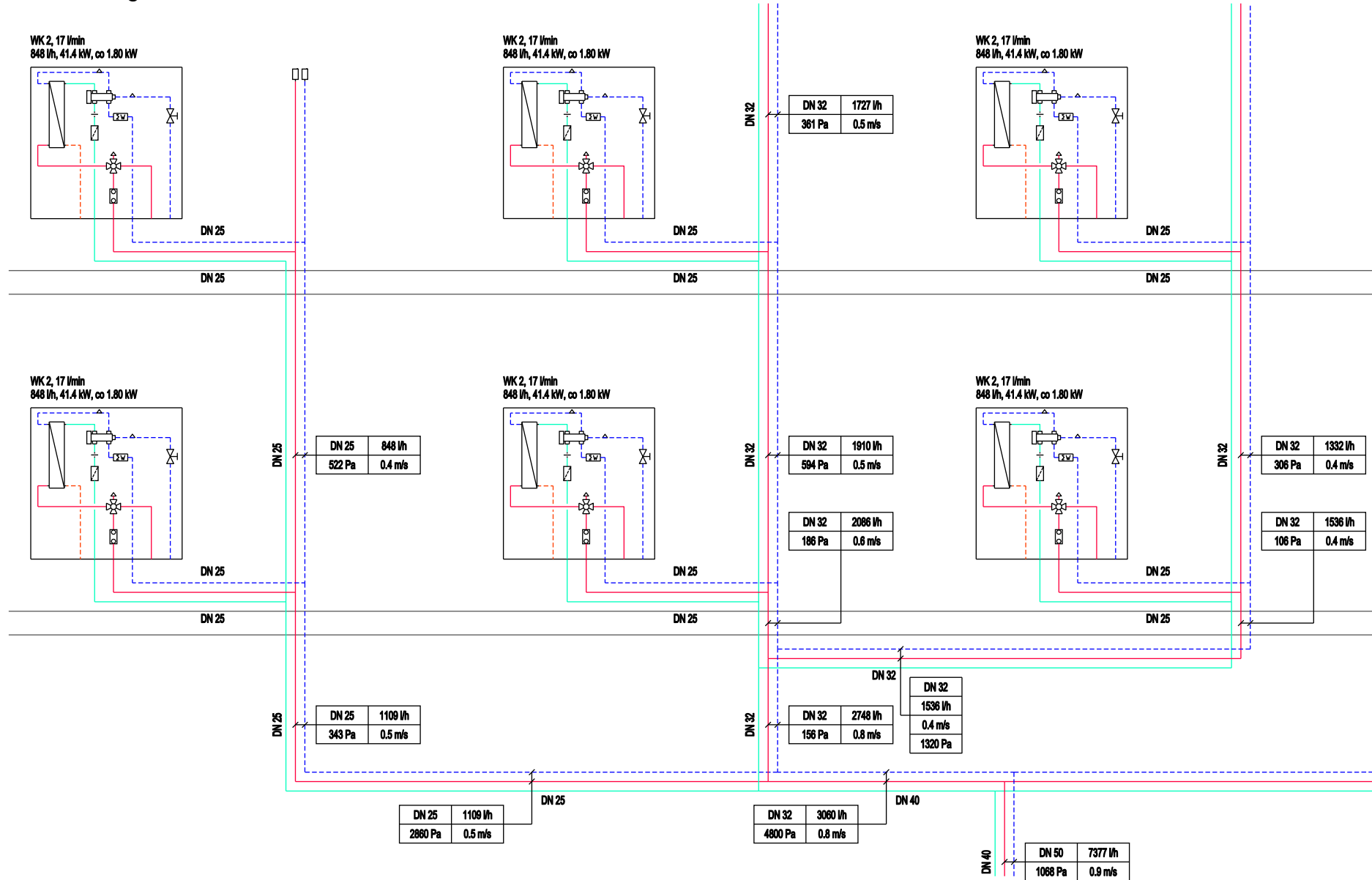
- Possibility of defining systems consisting of two schemes. It is needed when one heat source works with two heating circuits.
- Automatic selection of pipe diameters.
- Comprehensive hydraulic calculations for central heating with determination of final pressure losses.
- Automatic selection of circulation pumps and buffer charging pump (Wilo or Grundfos).
- Determination of peak power, buffer capacity and required power of the heat source. The parameters of an additional heat source (e.g. heat pumps or solar panels) are taken into account.
- Automatic selection of housing stations based on the DHW capacity or after determining the type and quantity of sanitary utensils that will be attached to the station.
- Automatic recalculation and re-selection of home stations when the installation operating parameters change (e.g. when the flow temperature changes).
- Calculation of the cold water system with the selection of optimal pipe diameters in order to adjust the pressure losses to the available pressure from the water supply network..
- Automatic drawing of scheme with markings of pipe diameters, pressure drops and flows.
- Ability to save projects to files that allows for later editing or creating installation variants (the structure of the project is saved, not the dwg file).
- Inserting tables with technical parameters and calculation results into the drawing.
- Creating specifications with receivers as well as the number and types of pipes (for central heating and water installations).



Name	CW	DHW	Qua...
Kitchen sink	0.07	0.07	1
Dishwasher	0.07	0.00	1
Washing machine	0.15	0.00	1
Sink	0.07	0.07	1
Shower and bathtub	0.15	0.15	1
Shower	0.15	0.15	
Bathtub	0.15	0.15	
Bidet	0.07	0.07	
Cistern valve	0.13	0.00	1
Urinal flush valve (manual)	0.30	0.00	
Urinal flush valve (electronic)	0.30	0.00	
Flush valve for toilet	1.00	0.00	
Draw-off valve DN15	0.30	0.00	
Draw-off valve DN20	0.50	0.00	
Draw-off valve DN25	1.00	0.00	
Draw-off valve with aerator DN10	0.15	0.00	
Draw-off valve with aerator DN15	0.15	0.00	

Window for hot water preparation station selection and determination of calculation flows

Scheme fragment:



Sample printout with central heating calculations

Heat exchanger type	Number apartme	Section	Simultar DHW producti	Simultan heating	Volume flow DHW production [l/h]	Capacity heating [kW]	Volume flow heating [l/h]	Total volume flow [l/h]	DN	R * l [Pa]	v [m/s]	Z [Pa]	Pressure loss [Pa]
Riser Nr. 7 (apartment on top of another) (N3)													
M3: WK 2, 17 l/min, 848 l/h, 41.4 kW, HZ 1.80 kW	1	Section A 1 (N3)	1.000	0.000	848	0.0	0	848	25	$87 * 14.4 = 1253$	0.41	82	1335
N0: Supply line	1	Section Z 1 (N0)	1.000	0.000	848	0.0	0	848	25	$87 * 20.0 = 1740$	0.41	206	1946

Sum:

3281

Riser Nr. 4 (apartment on top of another) (H7)

G7: WK 2, 17 l/min, 848 l/h, 41.4 kW, HZ 1.80 kW	1	Section A 2 (H7)	1.000	0.000	848	0.0	0	848	25	$87 * 6.0 = 522$	0.41	82	604
G6: WK 2, 17 l/min, 848 l/h, 41.4 kW, HZ 1.80 kW	2	Section A 3 (H6)	1.237	0.763	1050	1.4	59	1109	25	$143 * 6.0 = 858$	0.53	140	998
G5: WK 2, 17 l/min, 848 l/h, 41.4 kW, HZ 1.80 kW	3	Section A 4 (H5)	1.426	1.574	1210	2.8	122	1332	32	$51 * 6.0 = 306$	0.37	67	373
G4: WK 2, 17 l/min, 848 l/h, 41.4 kW, HZ 1.80 kW	4	Section A 5 (H4)	1.590	2.410	1349	4.3	187	1536	32	$66 * 6.0 = 396$	0.42	89	485
G3: WK 2, 17 l/min, 848 l/h, 41.4 kW, HZ 1.80 kW	5	Section A 6 (H3)	1.738	3.262	1474	5.9	253	1727	32	$82 * 6.0 = 492$	0.47	112	604
G2: WK 2, 17 l/min, 848 l/h, 41.4 kW, HZ 1.80 kW	6	Section A 7 (H2)	1.875	4.125	1590	7.4	320	1910	32	$99 * 6.0 = 594$	0.52	137	731
G1: WK 2, 17 l/min, 848 l/h, 41.4 kW, HZ 1.80 kW	7	Section A 8 (H1)	2.003	4.997	1699	9.0	387	2086	32	$116 * 1.6 = 186$	0.57	164	350
H1: Section (branch)	7	Section A 9 (H1)	2.003	4.997	1699	9.0	387	2086	32	$116 * 20.0 = 2320$	0.57	164	2484

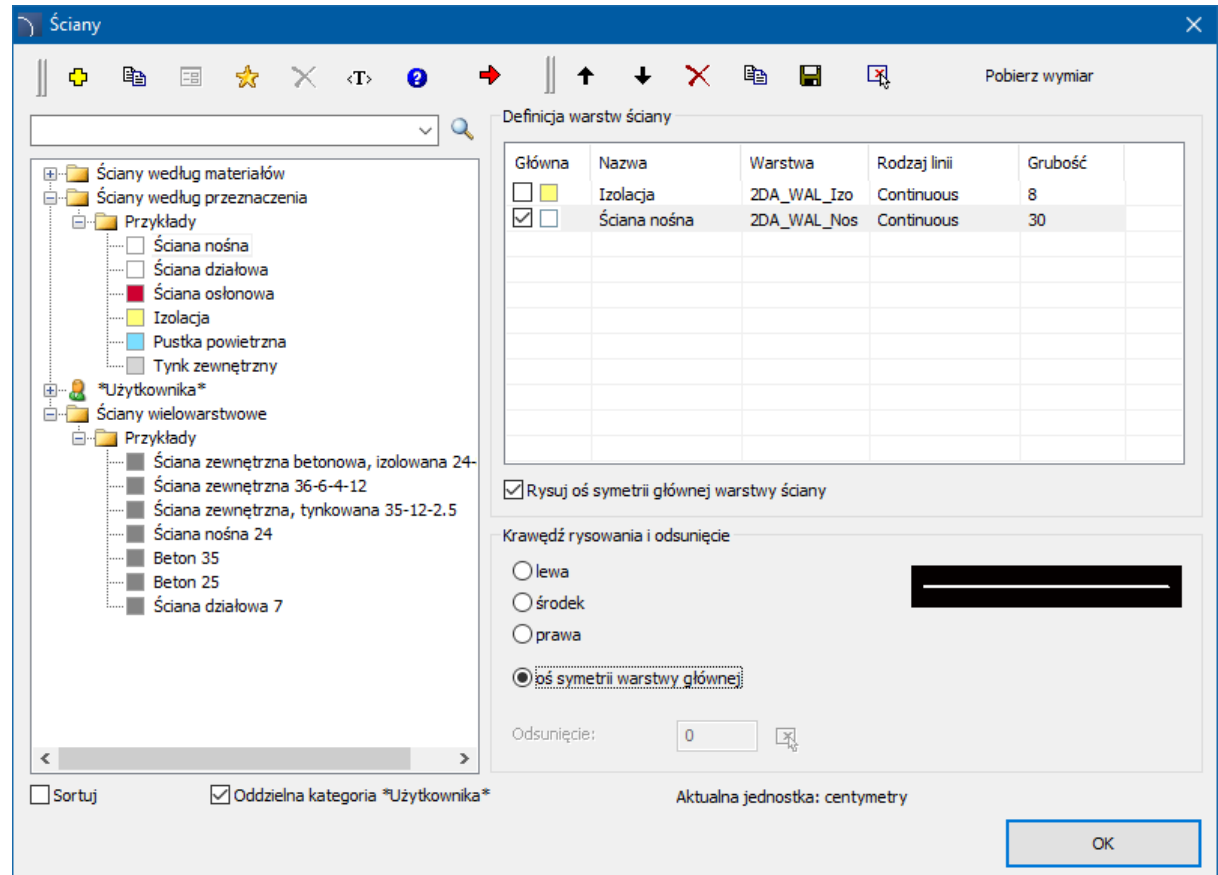
Sum:

6629

✓ CADprofi Architectural – changes in wall drawing

The way of drawing walls has been changed in CADprofi Architectural. Currently, the program allows you to select one of the walls as the main one, which can additionally be drawn with the axis of symmetry.

Another new feature is the ability to draw walls along the symmetry axis of the main wall layer.

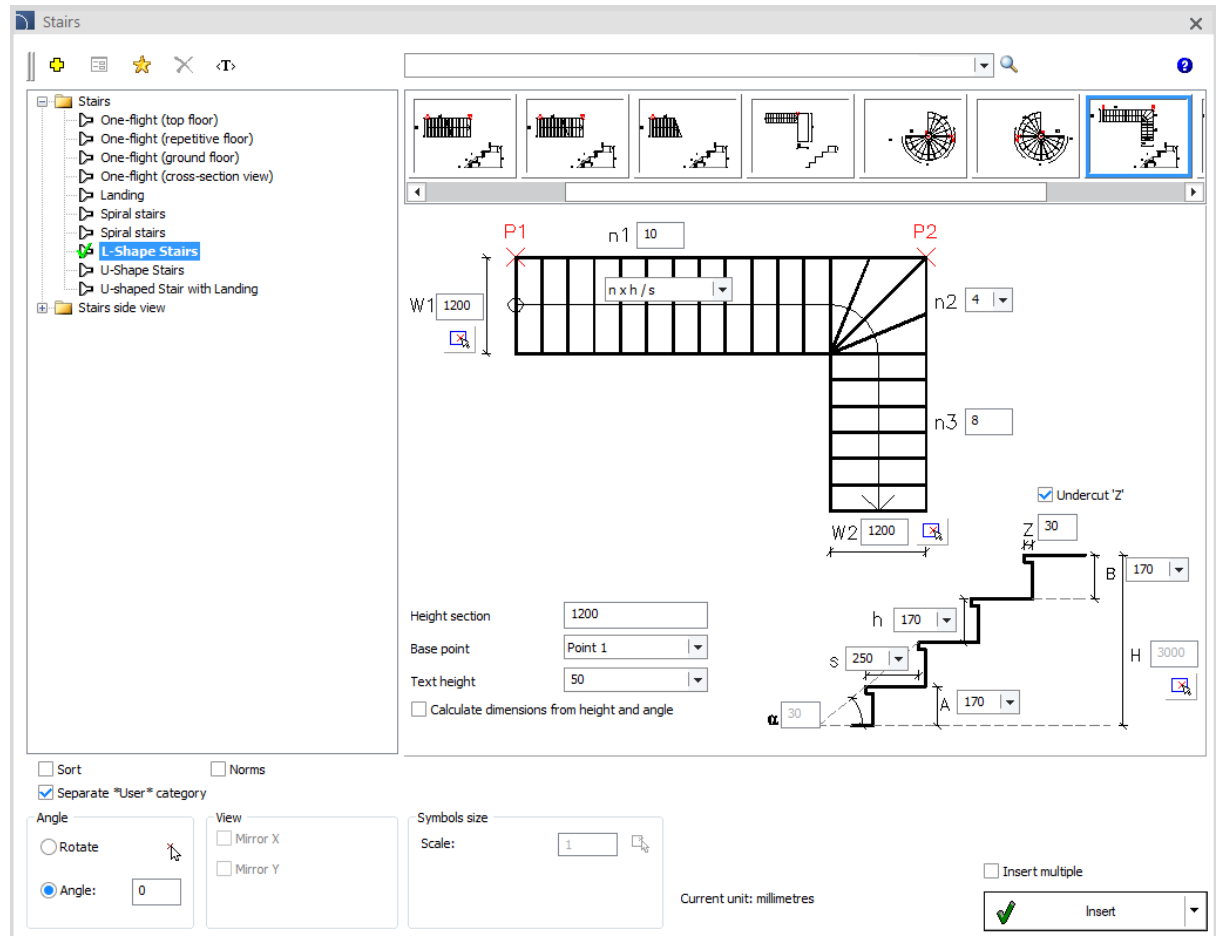





CADprofi

✓ CADprofi Architectural – L and U shape stairs

The stair library available in CADprofi Architectural has been extended to include L shape stairs, U shape stairs and U shape stairs with landing.



✓ CADprofi Electrical – changes in busbar and cable trays systems

The *Busbars and cable trays*  commands have been extended.

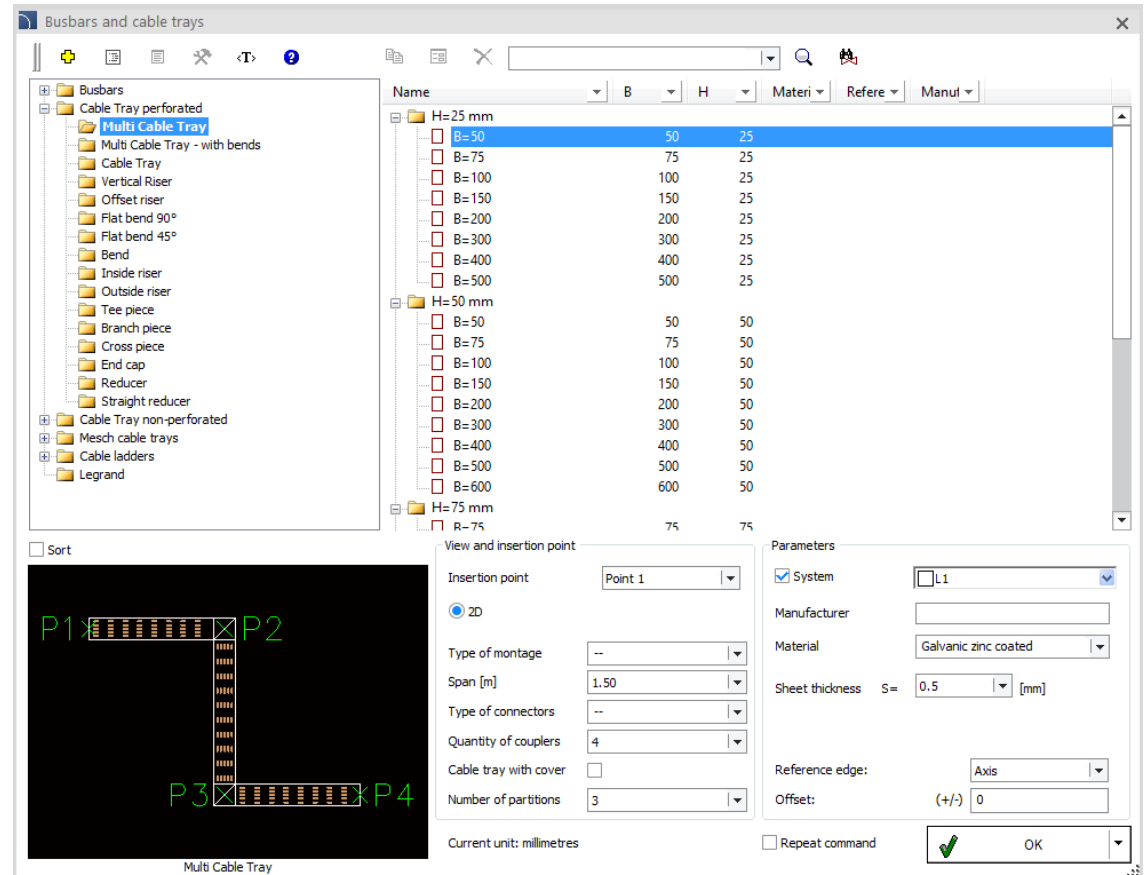
The busbar library has been extended with additional elements, including heads for switchgears and transformers. Currently, the system includes all the elements necessary to design busbars installations.

Cable trays systems were also added to the command: perforated and non-perforated sheet metal trays, mesh trays and cable ladders.

These systems allow user to make more accurate drawings while specifying accessories (fasteners, connectors, partitions and covers). The ability to specify accessories has also been introduced to the former 2D cable tray system.

Attributes	
Mountings	--
Mountings distance [m]	1.50
Couplers	M8
Quantity of couplers	1
Cover	<input type="checkbox"/>
Divider	0
Material	Aluminium

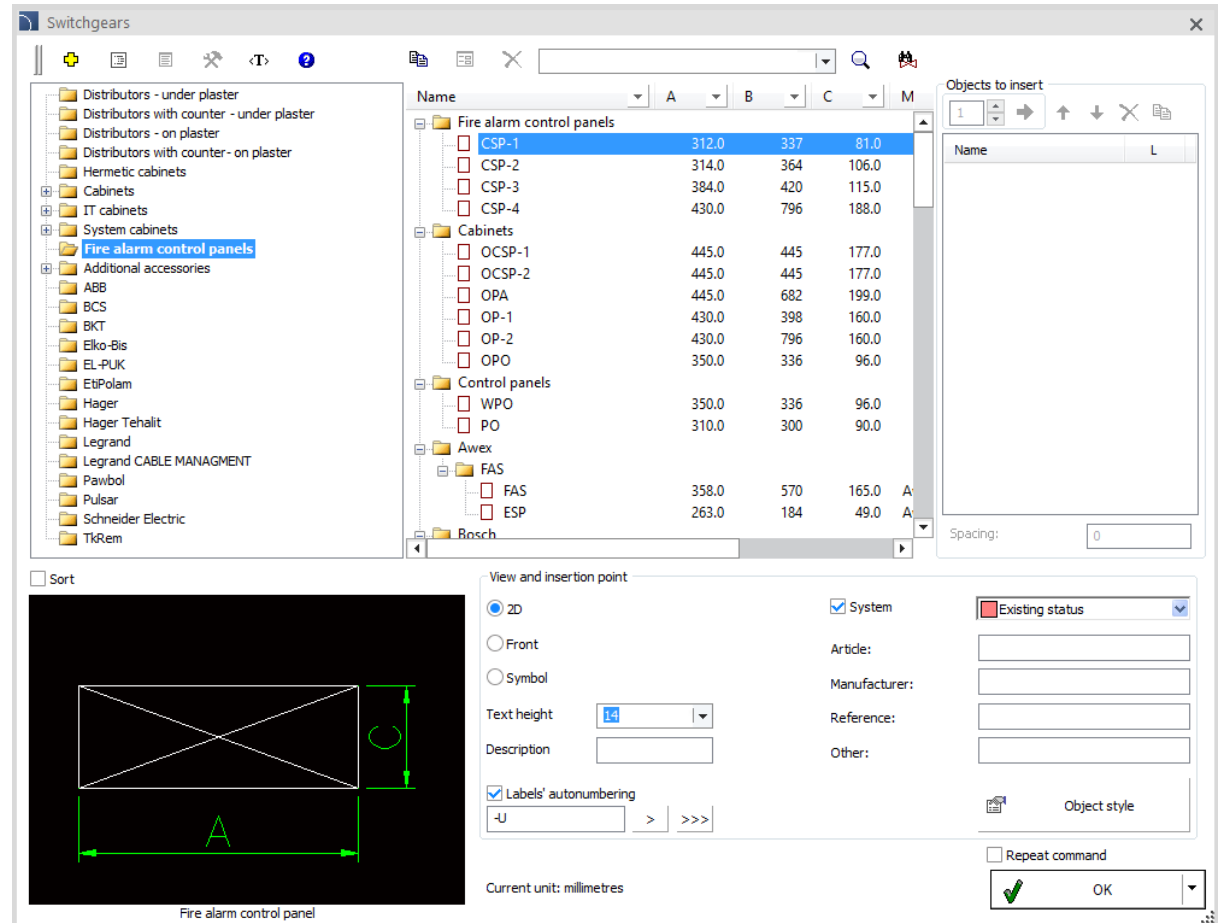
All accessories are included in the bill of materials.



The library is parametric, so by simply entering any dimensions, the library can be independently extended by users with additional types and sizes. As a result, system components from any manufacturer can be used in projects.

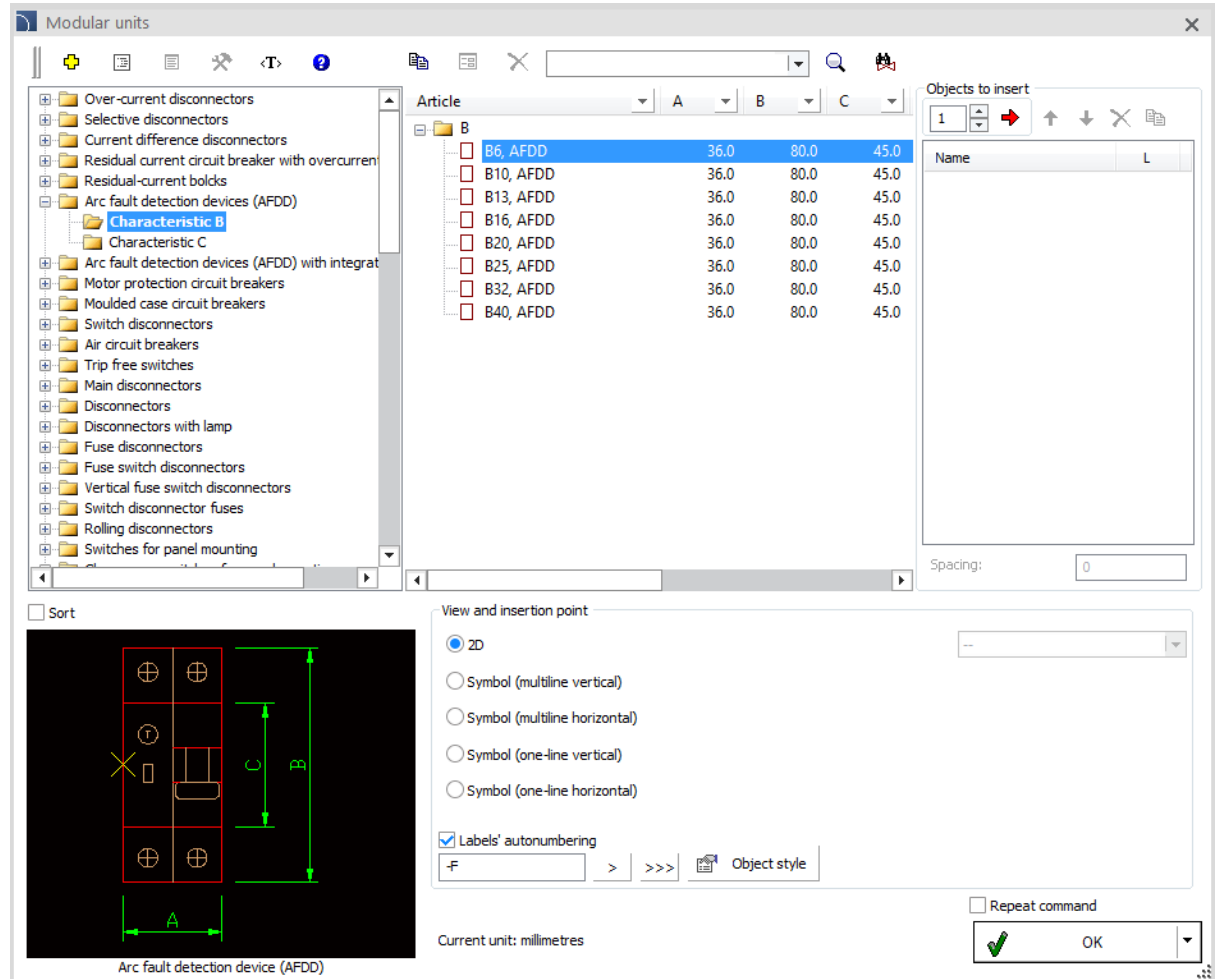
✓ CADprofi Electrical – fire alarm control panels

The switchgear library available in CADprofi Electrical has been extended with fire alarm control panels from Awex, Bosch, D + H, LST, POLON-ALFA, Satel, and Siemens.



✓ CADprofi Electrical – extension of modular apparatus library

The library of modular apparatus available in CADprofi Electrical has been extended, with two-, three- and four-level terminals, connectors, distribution blocks, arc fault detection devices and arc fault detection devices with integrated RCBO (AFDD).



The screenshot displays the 'Modular units' window in CADprofi Electrical. The left pane shows a hierarchical tree of electrical components, with 'Arc fault detection devices (AFDD)' expanded to show 'Characteristic B' and 'Characteristic C'. The right pane shows a table of articles for 'Characteristic B'.

Article	A	B	C
B6, AFDD	36.0	80.0	45.0
B10, AFDD	36.0	80.0	45.0
B13, AFDD	36.0	80.0	45.0
B16, AFDD	36.0	80.0	45.0
B20, AFDD	36.0	80.0	45.0
B25, AFDD	36.0	80.0	45.0
B32, AFDD	36.0	80.0	45.0
B40, AFDD	36.0	80.0	45.0

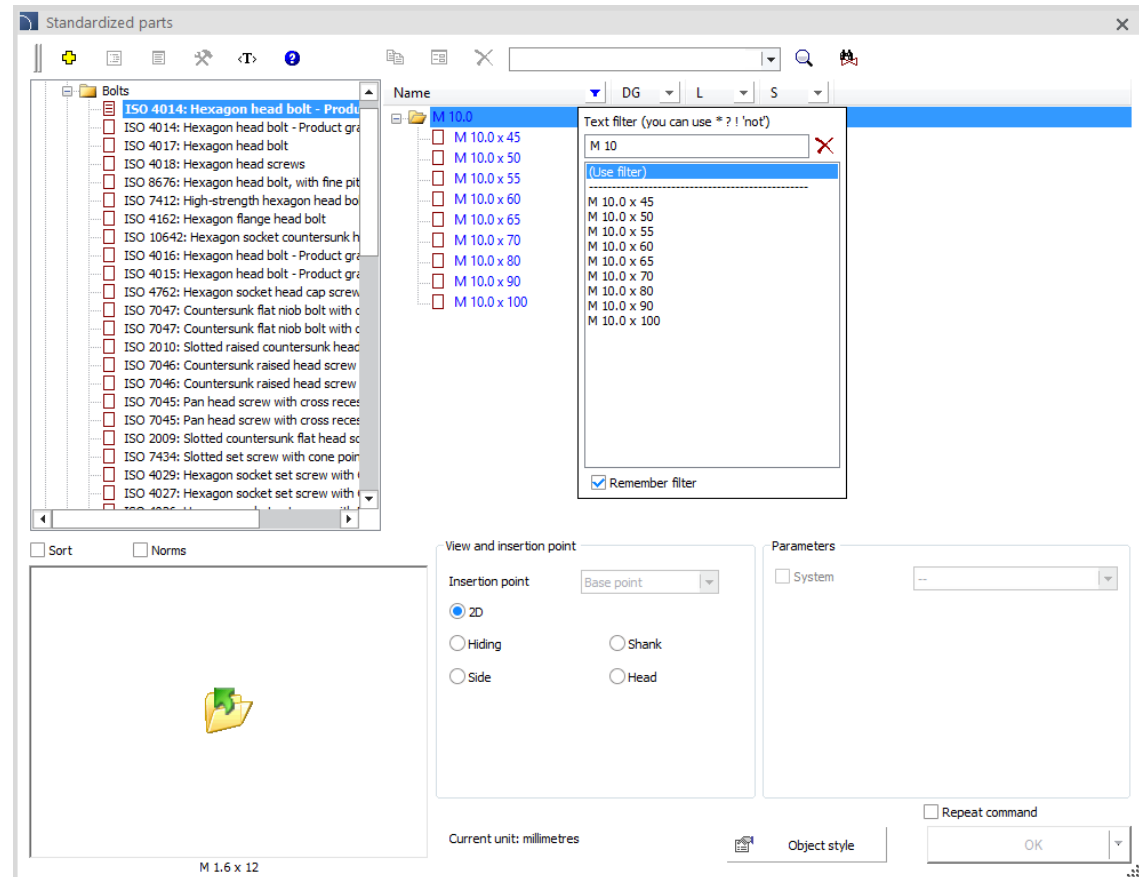
Below the table, a detailed diagram of an 'Arc fault detection device (AFDD)' is shown. The diagram is a rectangular symbol with a central horizontal bar and a vertical bar on the left. Dimensions are indicated: 'A' for width, 'B' for height, and 'C' for the height of the central bar. The current unit is set to millimetres.

The 'View and insertion point' section is visible, showing options for 2D, Symbol (multiline vertical), Symbol (multiline horizontal), Symbol (one-line vertical), and Symbol (one-line horizontal). The 'Labels' autonumbering' checkbox is checked, and the 'Object style' is set to '-F'. The 'Repeat command' checkbox is unchecked.

✓ CADprofi Mechanical – easy filtering of libraries

All libraries in the Standardized parts and Steel shapes commands have been optimized for convenient filtering, e.g. by dimensions, names, etc.

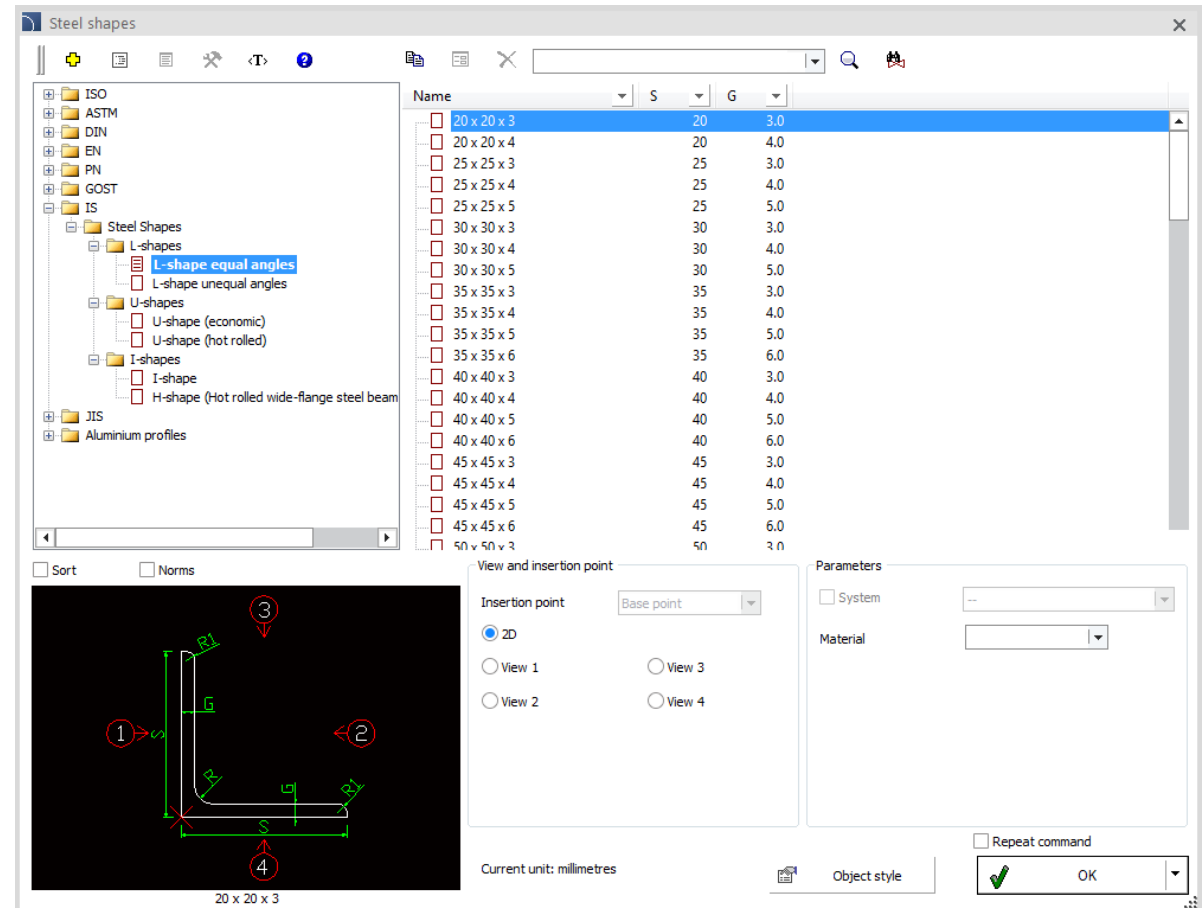
Once the filter has been added it can apply to the entire library, making it much easier to select the various elements needed to design a given component - for example, selecting bolts, washers, and nuts of a specific diameter.



✓ CADprofi Mechanical – library extension including Indian Standards

Program libraries have been extended with additional standards including elements of the Indian Industry Standard (IS):

- Head bolts: hexagonal, cylindrical, square, countersunk, construction bolts, shoulder bolts.
- Rolled head screws.
- Steel shapes (L-Shapes, U-Shapes, I-Shapes).

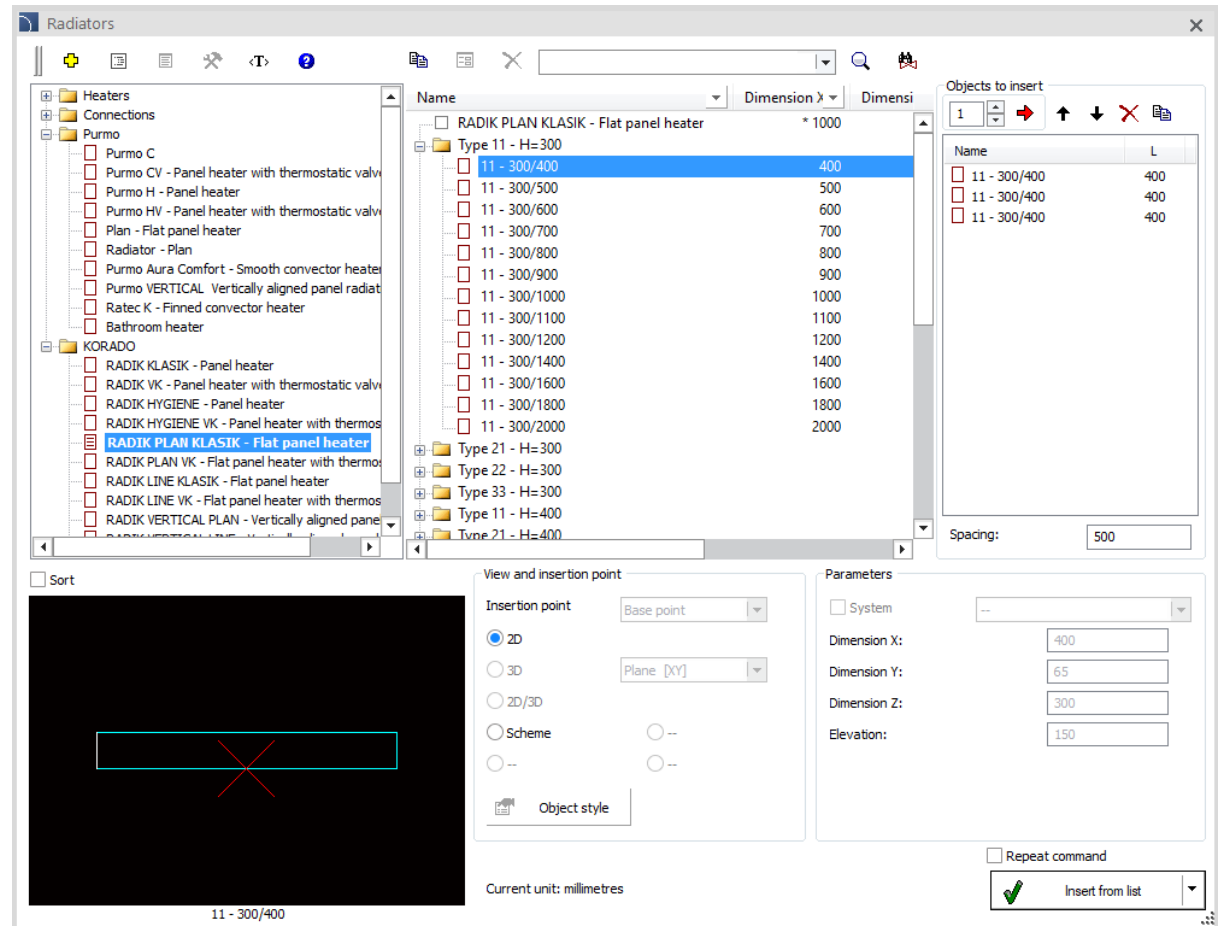




CADprofi

✓ CADprofi HVAC & Piping –Purmo and KORADO radiators

KORADO heaters have been added to CADprofi HVAC & Piping libraries and Purmo heaters have been updated.

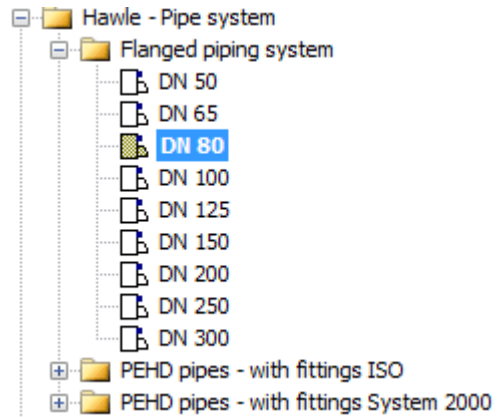




CADprofi

✓ CADprofi HVAC & Piping – HAWLE fittings and Piping system

HAWLE water fittings and piping system in detailed views have been added to CADprofi HVAC & Piping libraries.



Parametrical armature

Name	L	H	C	PN	Manufac
DN100x80	190	373	220	PN16	
DN125x100	200	450	250	PN16	
DN150x100	210	462	285	PN16	
DN200x150	230	563	340	PN16	
DN250x200	250	670	405	PN16	
DN300x250	270	753	460	PN16	
Hawle-PN16					
4150					
DN100x65	185	328	220	PN16	Hawle
DN100x80	200	336	220	PN16	Hawle
DN125x80	200	336	250	PN16	Hawle
DN125x100	220	373	250	PN16	Hawle
DN150x80	200	336	285	PN16	Hawle
DN150x100	220	373	285	PN16	Hawle
DN200x100	220	373	340	PN16	Hawle
DN200x150	285	462	340	PN16	Hawle
DN250x150	285	462	405	PN16	Hawle
DN250x200	340	563	405	PN16	Hawle
DN300x150	285	462	460	PN16	Hawle
DN300x200	340	563	460	PN16	Hawle
DN300x250	400	563	460	PN16	Hawle

View and insertion point

Insertion point: Point 1

System Start element End element Insert reducer

Supply

View 1 (selected), View 2, Scheme, View 3, View 4

Current unit: millimetres

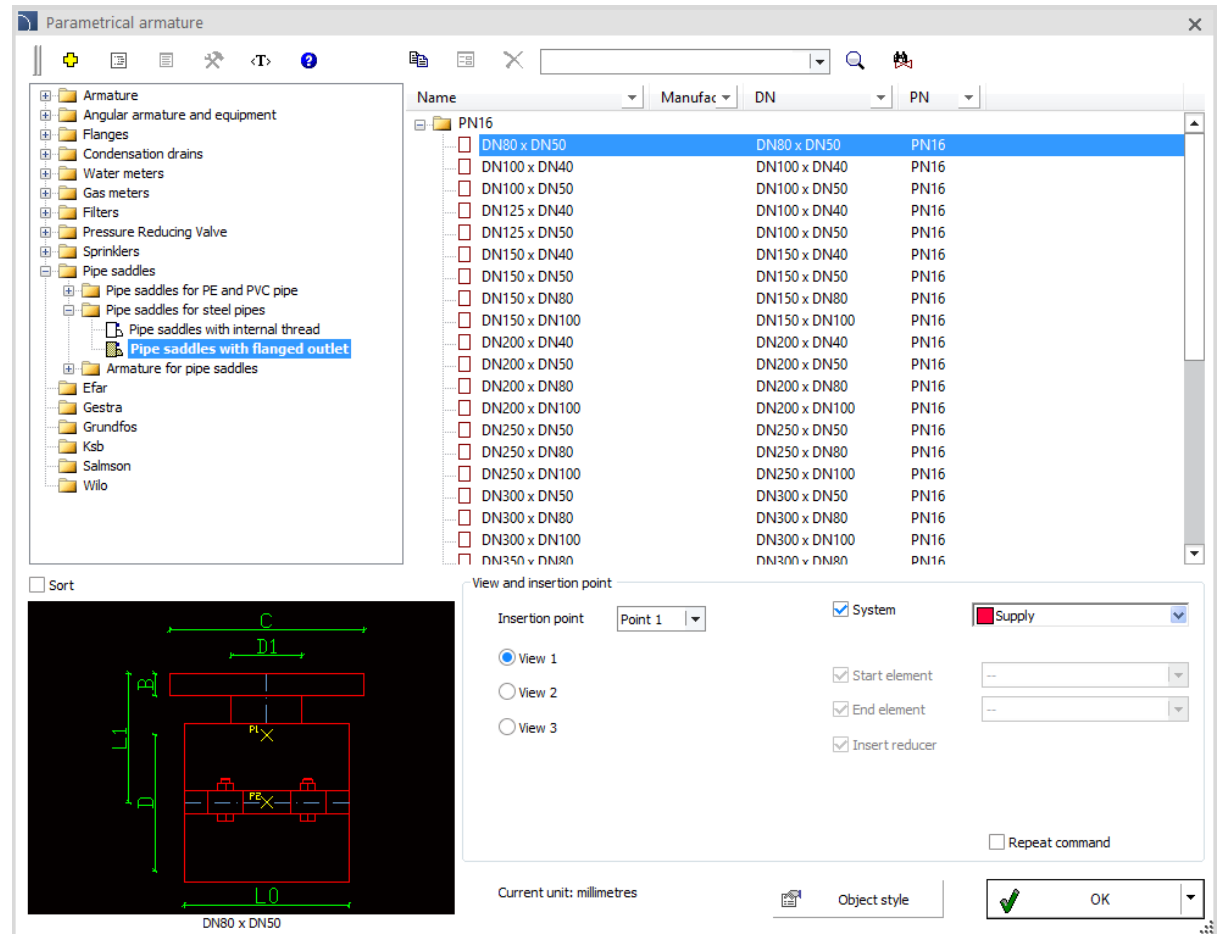
Object style

OK

✓ CADprofi HVAC & Piping – pipe saddles

Pipe saddles have been added to the program, including:

- Pipe saddles for PE and PVC pipes.
- Pipe saddles for steel pipes.
- Armature for pipe saddles.



Name	Manufac	DN	PN
PN16			
DN80 x DN50		DN80 x DN50	PN16
DN100 x DN40		DN100 x DN40	PN16
DN100 x DN50		DN100 x DN50	PN16
DN125 x DN40		DN100 x DN40	PN16
DN125 x DN50		DN100 x DN50	PN16
DN150 x DN40		DN150 x DN40	PN16
DN150 x DN50		DN150 x DN50	PN16
DN150 x DN80		DN150 x DN80	PN16
DN150 x DN100		DN150 x DN100	PN16
DN200 x DN40		DN200 x DN40	PN16
DN200 x DN50		DN200 x DN50	PN16
DN200 x DN80		DN200 x DN80	PN16
DN200 x DN100		DN200 x DN100	PN16
DN250 x DN50		DN250 x DN50	PN16
DN250 x DN80		DN250 x DN80	PN16
DN250 x DN100		DN250 x DN100	PN16
DN300 x DN50		DN300 x DN50	PN16
DN300 x DN80		DN300 x DN80	PN16
DN300 x DN100		DN300 x DN100	PN16
DN350 x DN80		DN300 x DN80	PN16



CADprofi

✓ CADprofi HVAC & Piping – extension of the outlets command

Outlets command has been extended with SMAY company outlets and Maico Ventilatoren roof blowers.



Name	D	Capacity	Manufac
Slotted outlet 3			
600	160.0	270	
750	160.0	306	
900	160.0	342	
1050	160.0	378	
1200	160.0	414	
1350	160.0	432	
1500	160.0	468	
1650	160.0	558	
1800	160.0	594	
1950	160.0	612	
Smay			
NSW			
NSW-N-3-800/S3I-2-160	200.0		Smay
NSW-N-3-1000/S3I-2-160	200.0		Smay
NSW-N-3-1500/S3I-2-160	200.0		Smay
NSW-N-3-2000/S3I-2-160	200.0		Smay

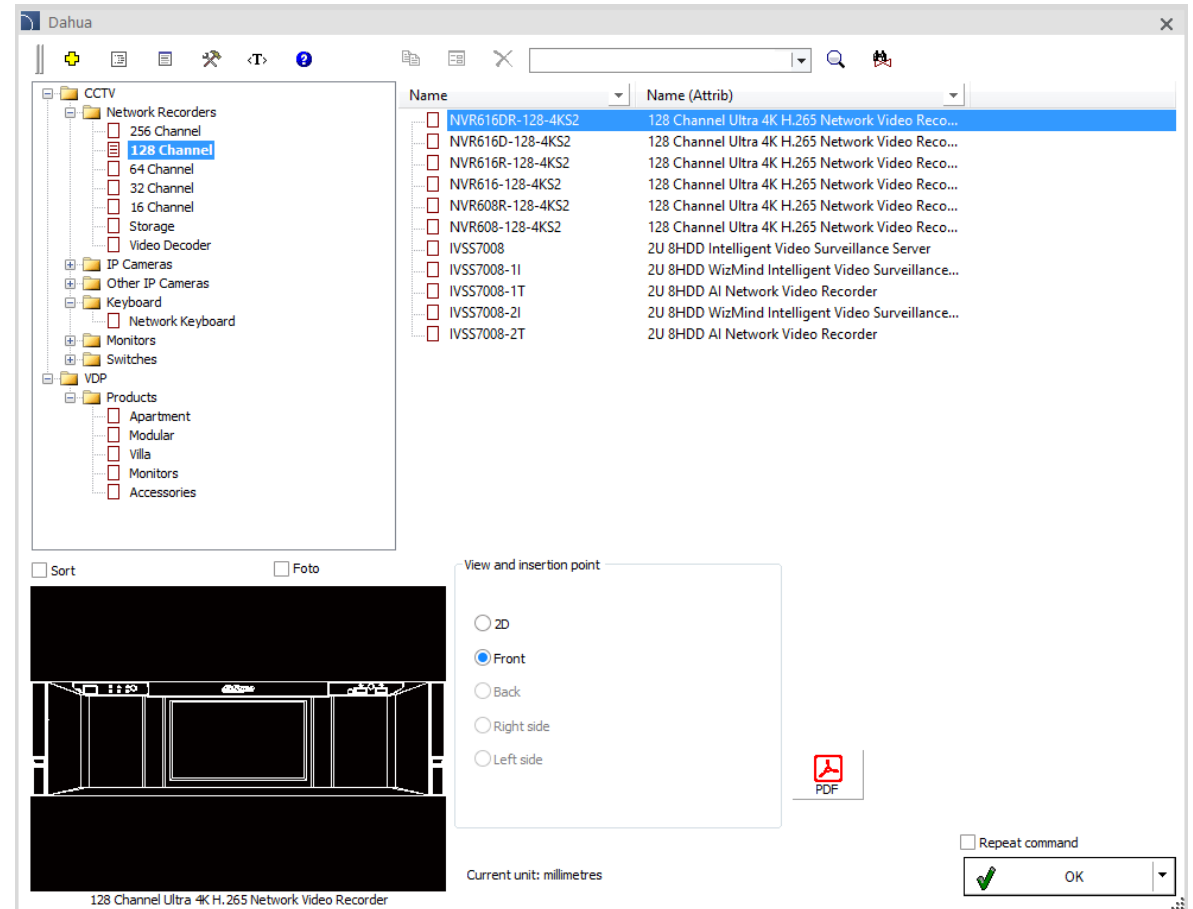
Name	L
NSW-N-3-1500/S3I-2-160	1500
NSW-N-3-1500/S3I-2-160	1500

✓ New Dahua library

New library available in CADprofi program contains Dahua Electric products, including:

- Network Recorders.
- IP Cameras.
- Network Keyboards.
- Monitors.
- Switches.
- VDP products (apartment, modular, monitors, accessories).

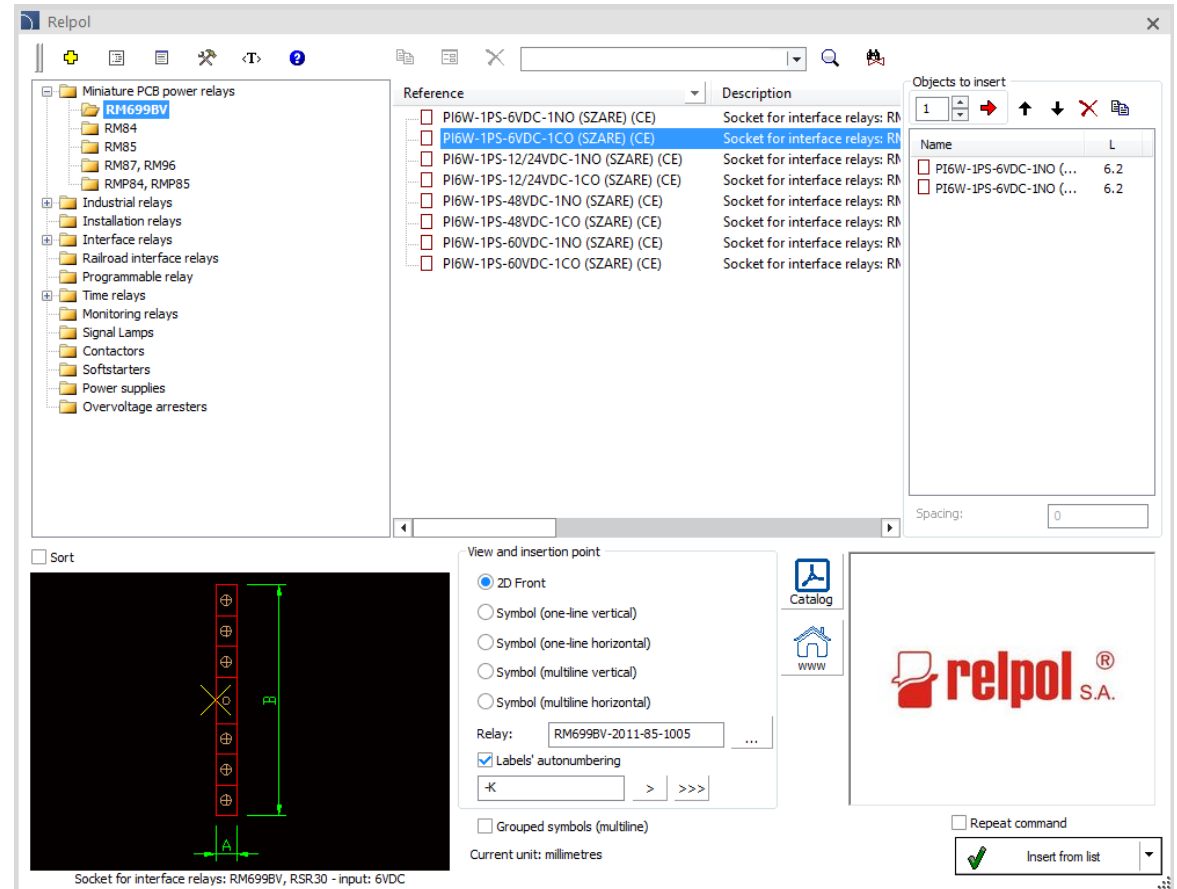
Library also contains VDP Dahua schemes.



✓ New Relpol library

New library available in CADprofi program contains Relpol Electric products, including:

- Miniature, industrial, installation, interface, railroad, programmable, time and monitoring relays.
- Signal lamps.
- Contactors.
- Softstarters.
- Power supplies.
- Overvoltage arresters.

Reference

Reference	Description
<input type="checkbox"/> PI6W-1PS-6VDC-1NO (SZARE) (CE)	Socket for interface relays: RM
<input checked="" type="checkbox"/> PI6W-1PS-6VDC-1CO (SZARE) (CE)	Socket for interface relays: RM
<input type="checkbox"/> PI6W-1PS-12/24VDC-1NO (SZARE) (CE)	Socket for interface relays: RM
<input type="checkbox"/> PI6W-1PS-12/24VDC-1CO (SZARE) (CE)	Socket for interface relays: RM
<input type="checkbox"/> PI6W-1PS-48VDC-1NO (SZARE) (CE)	Socket for interface relays: RM
<input type="checkbox"/> PI6W-1PS-48VDC-1CO (SZARE) (CE)	Socket for interface relays: RM
<input type="checkbox"/> PI6W-1PS-60VDC-1NO (SZARE) (CE)	Socket for interface relays: RM
<input type="checkbox"/> PI6W-1PS-60VDC-1CO (SZARE) (CE)	Socket for interface relays: RM

Objects to insert

Name	L
<input type="checkbox"/> PI6W-1PS-6VDC-1NO (...)	6.2
<input checked="" type="checkbox"/> PI6W-1PS-6VDC-1NO (...)	6.2

Spacing: 0

Sort

View and insertion point

2D Front

Symbol (one-line vertical)

Symbol (one-line horizontal)

Symbol (multiline vertical)

Symbol (multiline horizontal)

Relay: RM699BV-2011-85-1005 ...

Labels' autonumbering

-K > >>>

Grouped symbols (multiline)

Current unit: millimetres

Repeat command

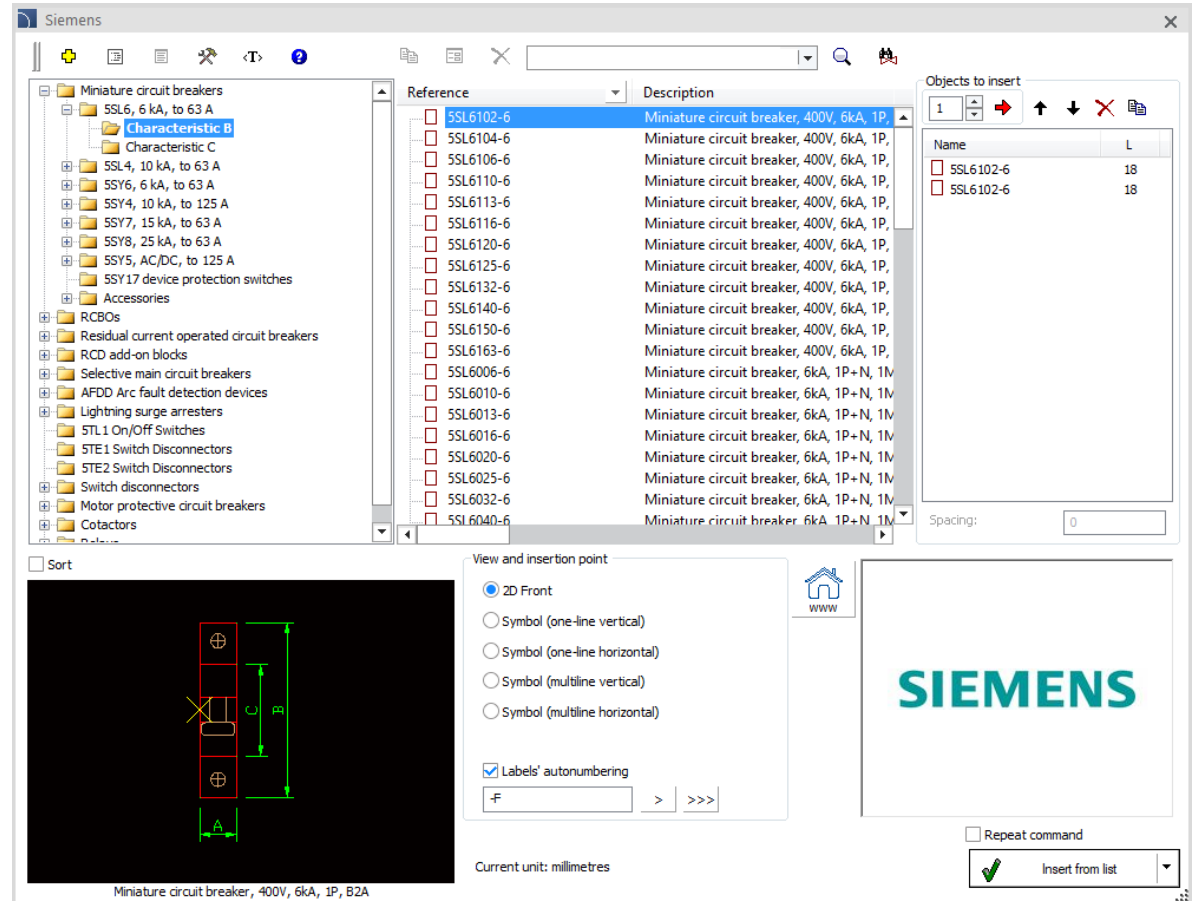
Insert from list

Socket for interface relays: RM699BV, RSR30 - input: 6VDC

✓ New Siemens library

New library available in CADprofi program contains Siemens products, including:

- Miniature circuit breakers.
- RCBOs
- Residual current operated circuit breakers.
- RCD add-on blocks.
- Selective main circuit breakers.
- AFDD Arc fault detection devices.
- Lightning surge arresters.
- 5TL1 On/Off switches.
- 5TE1/5TE2 switch disconnectors.
- Switch disconnectors.
- Motor protective circuit breakers.
- Contactors

Siemens

Reference	Description
5SL6102-6	Miniature circuit breaker, 400V, 6kA, 1P
5SL6104-6	Miniature circuit breaker, 400V, 6kA, 1P
5SL6106-6	Miniature circuit breaker, 400V, 6kA, 1P
5SL6110-6	Miniature circuit breaker, 400V, 6kA, 1P
5SL6113-6	Miniature circuit breaker, 400V, 6kA, 1P
5SL6116-6	Miniature circuit breaker, 400V, 6kA, 1P
5SL6120-6	Miniature circuit breaker, 400V, 6kA, 1P
5SL6125-6	Miniature circuit breaker, 400V, 6kA, 1P
5SL6132-6	Miniature circuit breaker, 400V, 6kA, 1P
5SL6140-6	Miniature circuit breaker, 400V, 6kA, 1P
5SL6150-6	Miniature circuit breaker, 400V, 6kA, 1P
5SL6163-6	Miniature circuit breaker, 400V, 6kA, 1P
5SL6006-6	Miniature circuit breaker, 6kA, 1P+N, 11V
5SL6010-6	Miniature circuit breaker, 6kA, 1P+N, 11V
5SL6013-6	Miniature circuit breaker, 6kA, 1P+N, 11V
5SL6016-6	Miniature circuit breaker, 6kA, 1P+N, 11V
5SL6020-6	Miniature circuit breaker, 6kA, 1P+N, 11V
5SL6025-6	Miniature circuit breaker, 6kA, 1P+N, 11V
5SL6032-6	Miniature circuit breaker, 6kA, 1P+N, 11V
5SL6040-6	Miniature circuit breaker, 6kA, 1P+N, 11V

Objects to insert

Name	L
5SL6102-6	18
5SL6102-6	18

Spacing: 0

View and insertion point

2D Front

Symbol (one-line vertical)

Symbol (one-line horizontal)

Symbol (multiline vertical)

Symbol (multiline horizontal)

Labels' autonumbering

-F > >>>

Current unit: millimetres

Repeat command

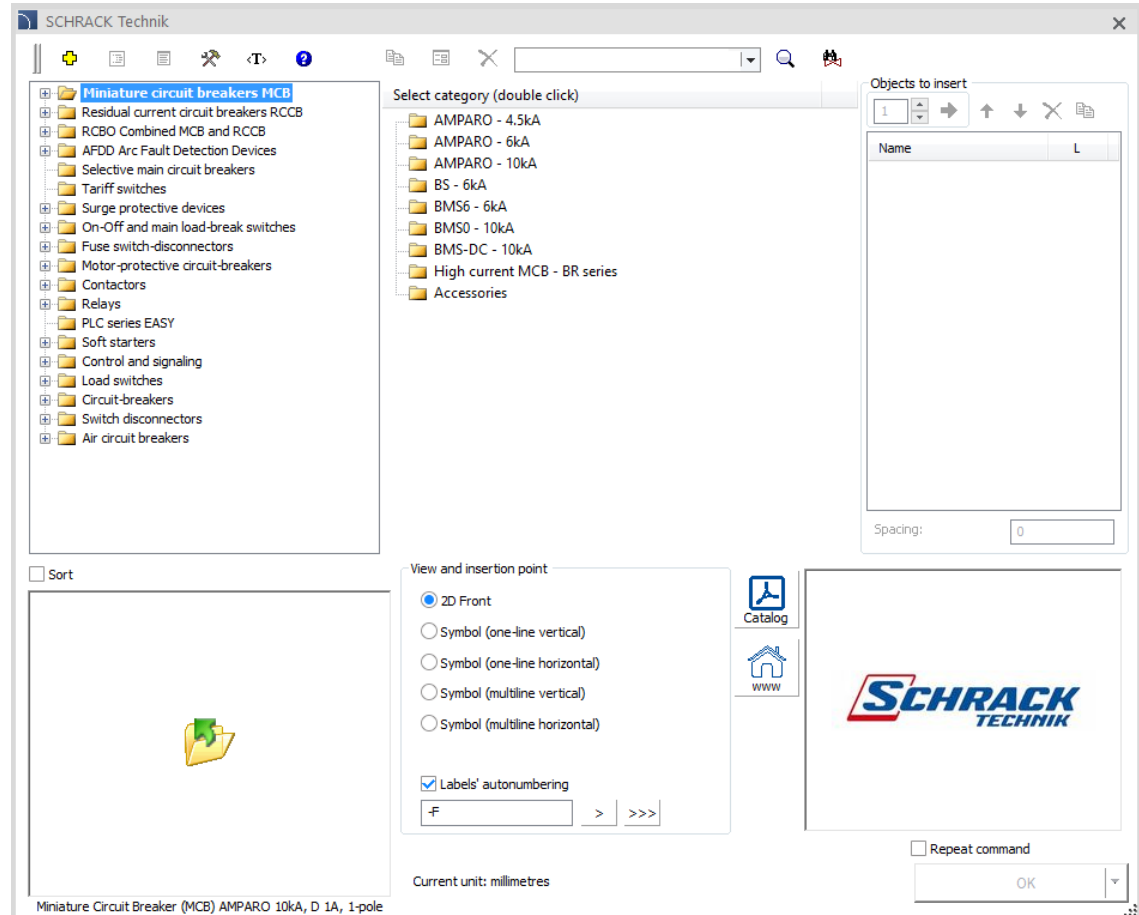
Insert from list

Miniature circuit breaker, 400V, 6kA, 1P, B2A

✓ New Schrack Technik library

New library available in CADprofi program contains Schrack Technik products, including

- Miniature and residual circuit breakers.
- Arc fault detection devices.
- RCBO Combined MCB and RCCB
- AFDD Arc Fault Detection Devices
- Selective main circuit breakers
- Tariff switches
- Surge protective devices
- On-Off and main load-break switches
- Fuse switch-disconnectors.
- Motor-protective circuit-breakers.
- Relays
- PLC series EASY
- Soft starters
- Control and signalling
- Load switches.
- Soft starters.
- Control and signalling.
- Load switches.
- Circuit and air circuit breakers.
- Switch disconnectors.

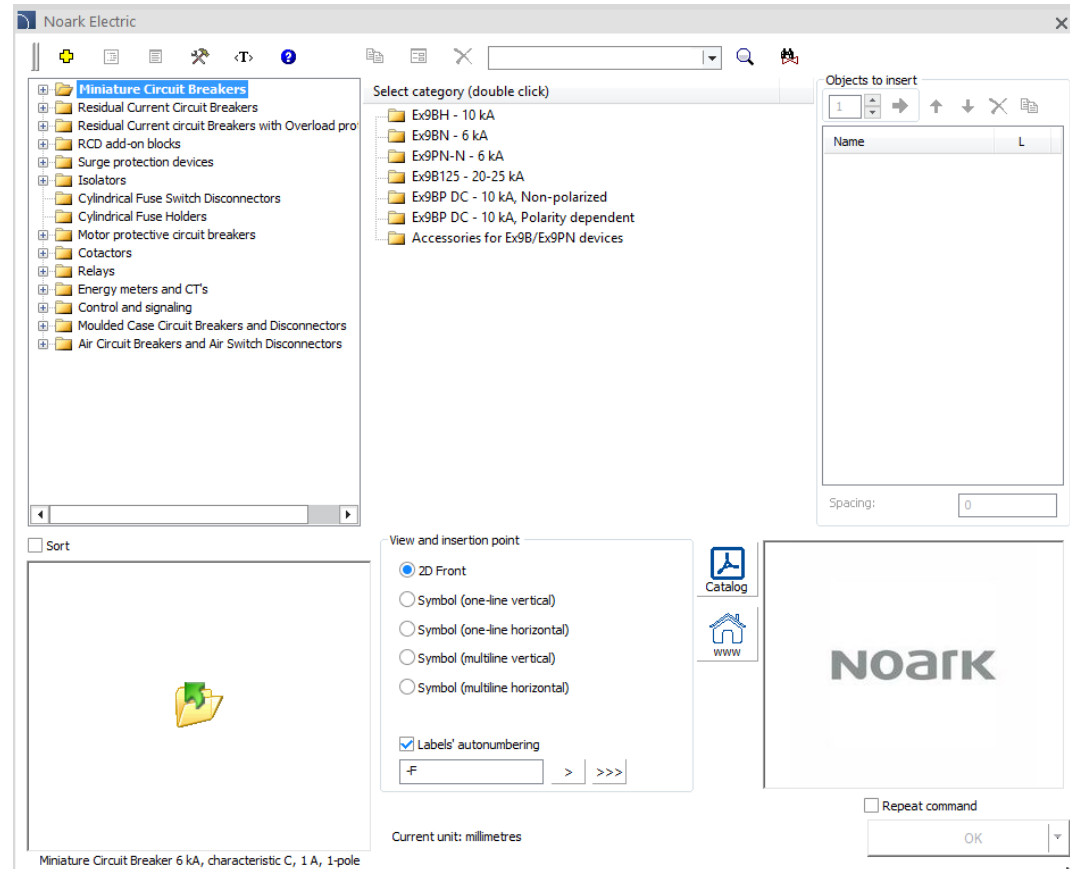


✓ New NOARK Electric library

New library available in CADprofi program contains NOARK Electric products, including:

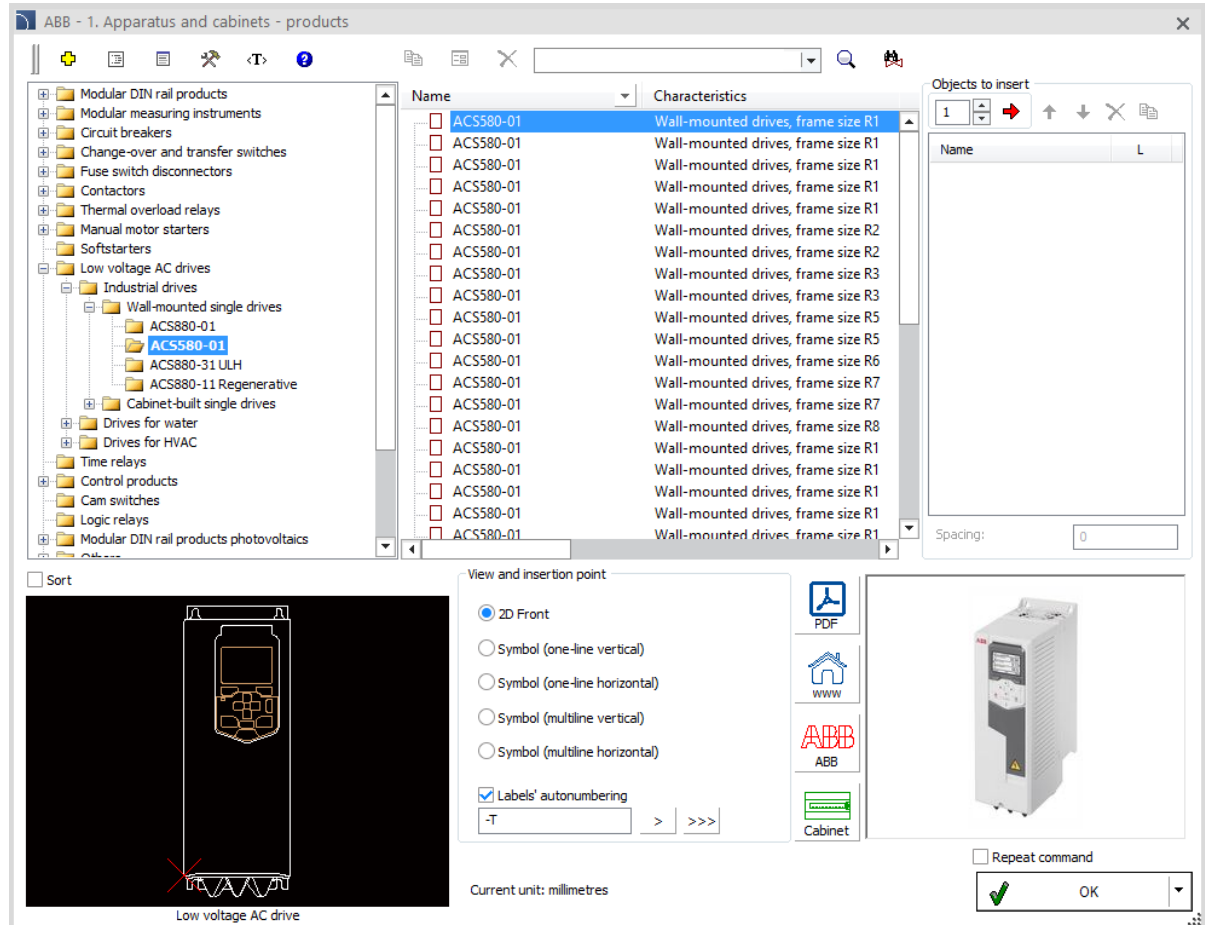
- Miniature and residual circuit breakers.
- RCD add-on blocks.
- Surge protection devices.
- Isolators.
- Motor protective circuit breakers.
- Contactors.
- Relays.
- Energy meters and CT's.
- Control and signalling.
- Moulded case and air circuit breakers and disconnectors.

NOARK



✓ ABB library extension – low voltage AC drives

The ABB library available in CADprofi has been extended with low voltage AC drives (industrial drives, drives for water, drives for HVAC).

The screenshot displays the CADprofi software interface with the ABB library extension for low voltage AC drives. The interface is divided into several sections:

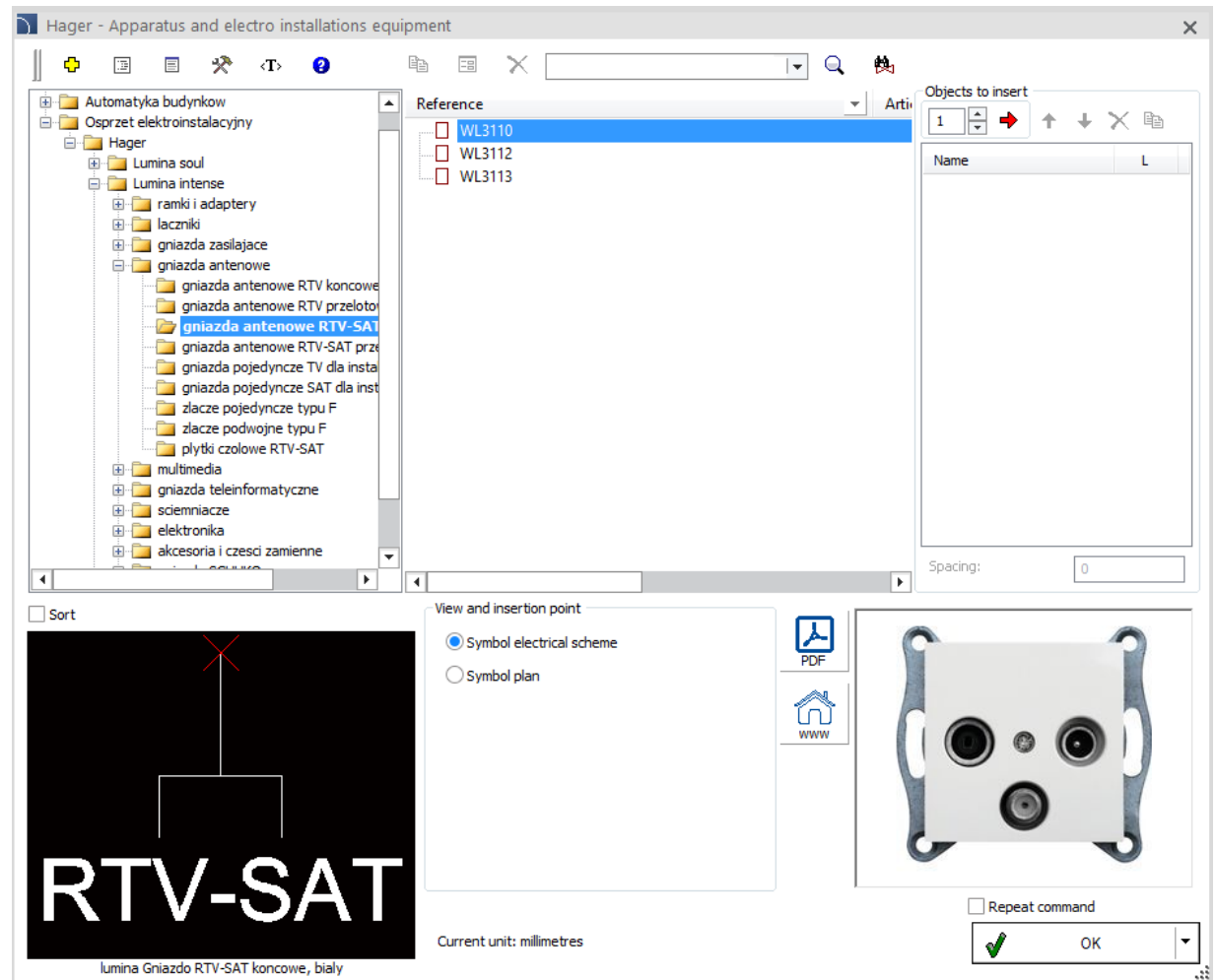
- Left Panel (Tree View):** Shows a hierarchical structure of products. The 'Low voltage AC drives' folder is expanded, showing sub-folders for 'Industrial drives', 'Drives for water', and 'Drives for HVAC'. The 'Industrial drives' folder is further expanded to show 'Wall-mounted single drives', which includes the 'ACS580-01' drive.
- Center Panel (Table):** A table listing the selected 'ACS580-01' drive with its characteristics. The table has two columns: 'Name' and 'Characteristics'. The 'Characteristics' column lists 'Wall-mounted drives, frame size R1' through 'R8'.
- Right Panel (Objects to insert):** A panel for inserting objects into the drawing. It includes a 'Name' field, a 'Spacing' field (set to 0), and a 'Repeat command' checkbox.
- Bottom Panel (View and insertion point):** A panel for configuring the view and insertion point. It includes a 'View and insertion point' section with radio buttons for '2D Front', 'Symbol (one-line vertical)', 'Symbol (one-line horizontal)', 'Symbol (multiline vertical)', and 'Symbol (multiline horizontal)'. There is also a 'Labels' section with a checked 'Labels' autonumbering' checkbox and a field for the label text ('-T').
- Bottom Left Panel (3D Model):** A 3D model of the 'Low voltage AC drive' is shown. The model is a vertical, rectangular unit with a control panel on the front.
- Bottom Right Panel (Buttons):** A panel with a 'Repeat command' checkbox, a 'Cabinet' button, and an 'OK' button.

✓ Update of Hager library

Hager library has been updated with:

- a new product tree structure that is more intuitive and speeds up device search,
- the latest series of devices with the QuickConnect system,
- an extended library of KNX system building automation products,
- the latest Hager Lumina products.

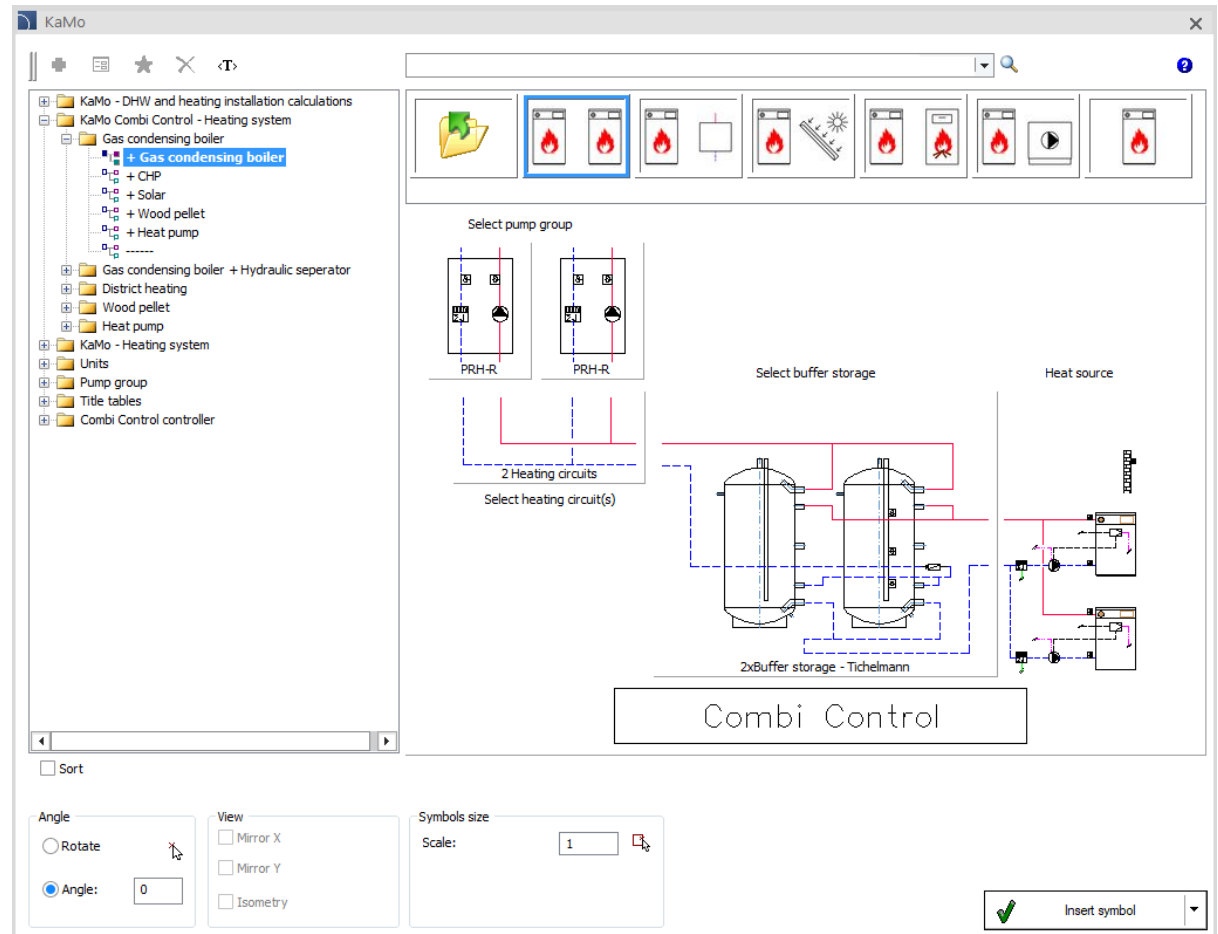
This library is available in Poland and Ukraine region.



✓ KaMo – product update and a new boiler room schematic generator

In the boiler room diagram generator, new systems use the universal Combi Control regulator. In the generator, user can select a specific system of buffers (1, 2 or 3 buffers connected in series or in the Tichelmann system). It is also possible to define the number of heating circuits with the selection of the desired pump groups.

A complete set of new housing stations for decentralized hot water preparation has also been introduced to the KaMo library.



The main window that allows user to conveniently define any scheme



CADprofi

✓ Update of manufacturers' libraries:





CADprofi

✓ Adjustment to many base CAD programs

CADprofi 2021 has been adjusted to work with latest CAD programs, including: 4MCAD 21, ActCAD 2020 (x64), AutoCAD 2021, ArCADia 12, Ares Commander 2020, BricsCAD 2021, CMS IntelliCAD 9.2 (x64), INTERsoft IntelliCAD 2020, progeCAD 2021, ZWCAD 2021.

CADprofi 2021 currently works with many base CAD programs including: AutoCAD (since the 2000 version), BricsCAD, GstarCAD, IntelliCAD, progeCAD, ZWCAD, ARES Commander Edition and others.

The logo for AutoCAD, with the word "AutoCAD" in a bold, red, sans-serif font.

The logo for ZWCAD, with the word "ZWCAD" in a bold, blue, sans-serif font, where the "W" and "C" are connected.

The logo for GstarCAD, with "Gstar" in blue and "CAD" in yellow, followed by the tagline "An Alternative CAD System" in blue.

The logo for BricsCAD, featuring a stylized blue "B" shape above the word "BRICSCAD" in a bold, black, sans-serif font.

The logo for progeSOFT, featuring a blue globe with a yellow vertical bar and a yellow triangle on top, above the word "progeSOFT" in a blue, sans-serif font.

The logo for IntelliCAD, featuring a purple diamond shape with a yellow vertical bar and a yellow triangle on top, above the word "IntelliCAD" in a bold, purple, sans-serif font.

The logo for Gräbert ARES Commander, featuring a red stylized flame or wing shape to the left of the text "Gräbert ARES® Commander" in a black, sans-serif font.